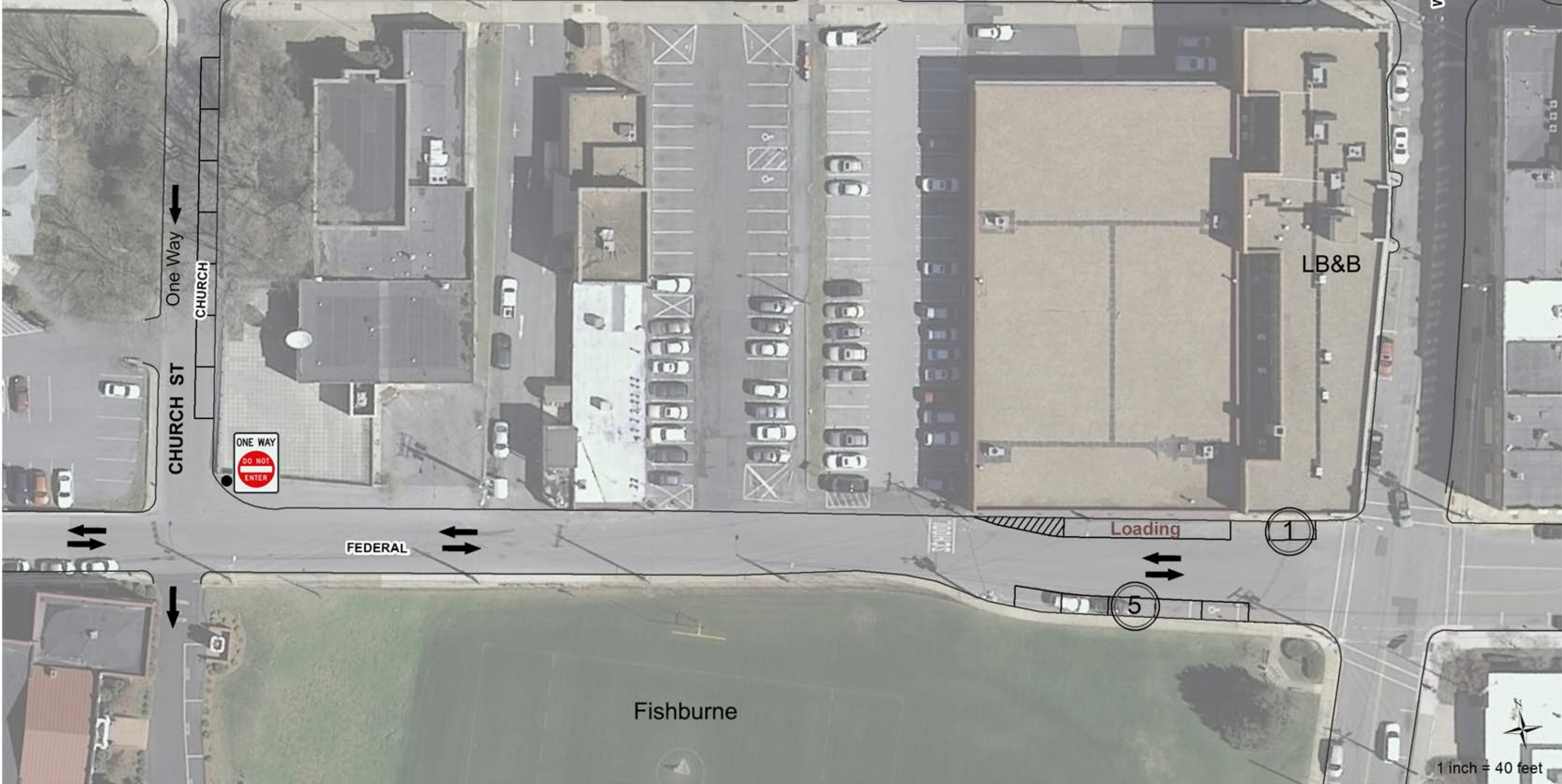


**Federal Street/Church Street  
Parking Concept**

**Scenario 1:**

Convert Church Street from two-way street to one-way only;  
Keep Federal as a two-way street;  
Total number of on-street parking proposed: 6



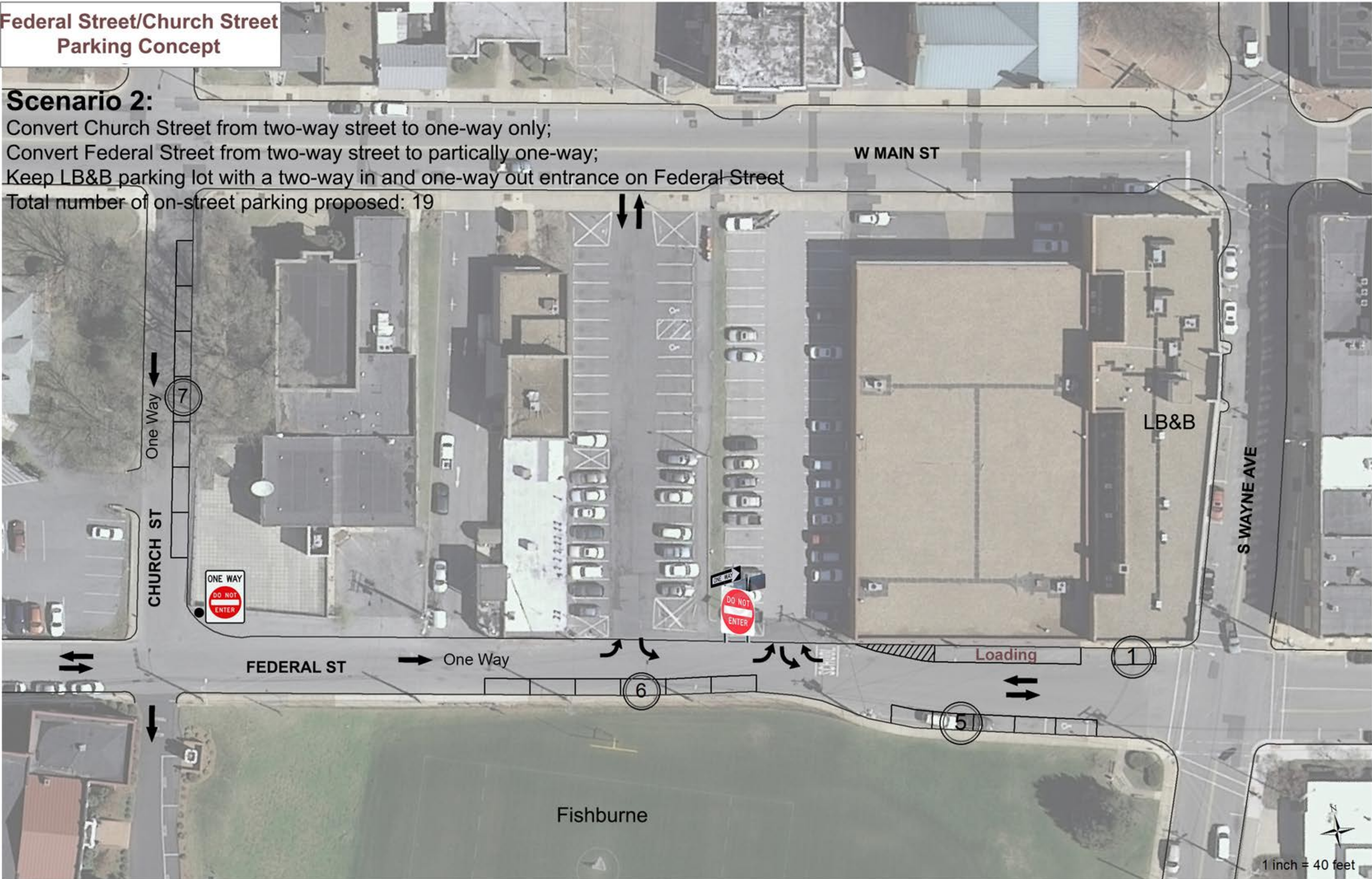
Fishburne

1 inch = 40 feet

**Federal Street/Church Street  
Parking Concept**

**Scenario 2:**

Convert Church Street from two-way street to one-way only;  
Convert Federal Street from two-way street to partially one-way;  
Keep LB&B parking lot with a two-way in and one-way out entrance on Federal Street  
Total number of on-street parking proposed: 19



**Federal Street/Church Street  
Parking Concept**

**Scenario 3:**

Convert Church Street from two-way street to one-way only;  
Convert Federal Street from two-way street to one-way only;  
Entrances on Federal Street between Church Street and Wayne  
Avenue will be one-way in and one-way out.  
Total number of on-street parking proposed: 20

